

## SPECIFICATIONS

Model / Variant		Quest M/T 4x2	
<b>Engine &amp; Transmission</b>			
Engine Type	2.5L DI-D Common Rail Turbocharged		
Displacement	cc	2,477	
Max. Output (EEC-Net)	PS / rpm	110 / 4,000	
Max. Torque (EEC-Net)	Nm / rpm	200 / 2,000	
Transmission	5-speed Manual		
<b>Chassis &amp; Suspension</b>			
Tyres	195 R15C		
Tyres & Rims	15" Alloy		
<b>Dimensions</b>			
Overall	Length	mm	5,220
	Width	mm	1,815
	Height	mm	1,655
Wheelbase	mm		3,000
	Track	mm	1,520
Deck	Front	mm	1,515
	Rear	mm	1,515
Weight	Length	mm	1,520
	Width	mm	1,470
	Height	mm	475
	Kerb	kg	1,600
Min. Turning Radius	Gross	kg	2,570
	m	5.7	
Fuel Tank Capacity	litre	75	

## STANDARD EQUIPMENT

Exterior Features		
Headlamps	Type	Halogen (Projector)
	Levelling Device	With (Manual)
Front Dynamic Shield Design	Colour Key	
Door Mirrors	Black	
Door Handles	Outer & Tailgate	Black
Wipers	With (Variable Intermittent)	
Interior Features		
Meter Panel	Type	Back-lit
	Multi-Information Display (MID)	With (Standard Type)
Rear View Mirror	Day & Night Type	
Steering Wheel	Type	3-spoke Urethane
	Adjustment	Tilt & Telescopic
Power Windows	With (Driver's Side Auto Up / Down with Anti-Pinch)	
Seats	Material	Fabric
	Front Adjustments	Manual (Driver & Passenger)
	Rear	With Centre Arm-rest & Storage Compartment

Model / Variant		Quest M/T 4x2	
<b>SAFETY</b>			
<b>Active</b>			
Anti-Lock Braking System (ABS)			With
Electronic Brake-force Distribution (EBD)			With
Seatbelt Reminder			Driver only
High Mount Stop Lamp			With (LED)
Parking Sensor			With (Rear)
ISOFIX			With Top Tether (x2)
Child Lock Protection			With
<b>Passive</b>			
SRS Airbags			2 (Dual-front Driver & Front Passenger)
RISE Body			With Extra Rigid Frame
Side Impact Door Beams			With
Seatbelts	Front	3-point ELR with Double Pretensioner (Driver) & Force Limiter	
	Rear	3-Point ELR (x3)	
Head Impact Protection Structure			With
Collapsible Steering Column			With
Collapsible Brake Pedal			With
<b>Security</b>			
Alarm System with Immobiliser			With

## COLOUR



White Pearl (W54)

100,000KM  
OR  
5 YEARS  
WARRANTY

# TRITON QUEST



Exclusive Distributor:

Mitsubishi Motors Malaysia Sdn Bhd (680028-M)  
Level 6, Building A, Dataran PHB, Saujana Resort, Seksyen U2, 40150 Shah Alam, Selangor.

www.mitsubishi-motors.com.my | [f](#) [i](#) [t](#) MitsubishiMotorsMalaysia

- Mitsubishi Motors Malaysia reserves the right to alter any details of specifications and equipment without prior notice.
- Details of specifications and equipment are also subject to change to suit local conditions and requirements.
- Vehicles and specifications in this brochure may vary from models available locally. Vehicle body and accessory colours may differ slightly from printed photos in this brochure.

Authorised Mitsubishi Motors Dealer  
**EVATREND SDN BHD** (610979-M)

Setapak : 03 - 4031 8866

Taman Midah : 03 - 9134 9900



Mitsubishi Motors Setapak  
Mitsubishi Motors Taman Midah



MITSUBISHI  
MOTORS

Drive your Ambition



## THE TRUE DEFINITION OF A VERSATILE WORKHORSE

A pick up truck with cutting-edge design that has everything you need to make driving easier, including a powerful engine, robust control and spacious cabin.

## POWER



**DHD**  
Direct Injection Diesel

**110 PS**  
MAX POWER

**200 Nm**  
MAX TORQUE

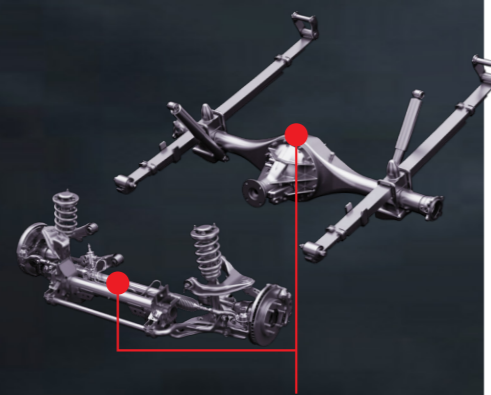
**2.5-LITRE**

Its turbocharged diesel engine delivers greater power, acceleration & efficiency giving you the perfect truck for all needs.

## CONTROL

### STRONG CHASSIS

The strong frame & aerodynamic design provide solid handling, excellent stability and better traction. Improvements to the chassis result in less body-rolls, increased rigidity and greater durability.



**SUSPENSION**  
RIDE DYNAMICS

### SUSPENSION SYSTEM

The robust suspension system features independent-wishbone with coil springs & a stabiliser bar at the front along with leaf springs in the rear for heavy loads and precise handling.

### BEST-IN-CLASS

### TURNING RADIUS

Exceptional maneuverability, making it easier to drive and maneuver on narrow roads and crowded working site.

**5.7M**

## CONVENIENCE



### SECRET STORAGE

Easy-to-reach yet far from prying eyes, the secret storage behind the rear seat also contains a jack & toolkit.



### MULTI-INFORMATION DISPLAY

Spacious cabin with multi-information display that gives you vital information about your truck.

## STORAGE

### LARGE CARGO BED

The functional J-Line gives more room & comfort for rear passengers while retaining a spacious cargo space.

### LOAD CAPACITY AND EASY LOADING

Provides all the space you need with a massive load capacity of up to 970kg\*. Its perfect distance from ground to tailgate make it easy for loading.

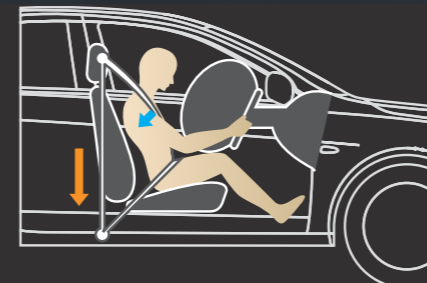


\*Load capacity is including passengers and cargo.

## SAFETY

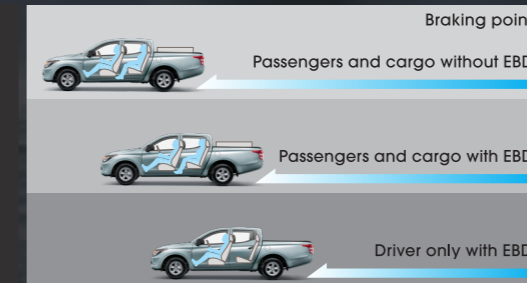
### SEATBELTS WITH PRETENSIONERS AND FORCE LIMITERS

Pretensioners restrain the driver and front passenger firmly on their seats during the deployment of airbags to minimise crash force in the event of a collision.



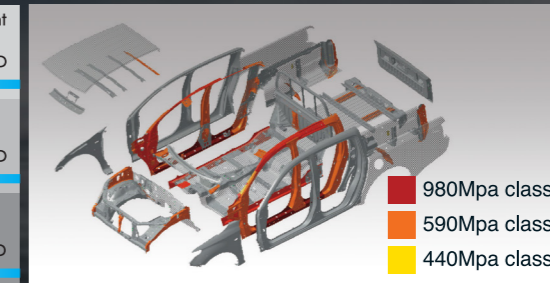
### ABS WITH EBD

ABS maintains maneuverability around obstacles under heavy braking while EBD distributes brake-force to reduce stopping distance.



### RISE BODY

The Reinforced Impact Safety Evolution body consists of crumple zones that safely dissipate collision impact.



980Mpa class  
590Mpa class  
440Mpa class

### ETACS-ELECTRONIC TIME AND ALARM CONTROL SYSTEM



**LANE CHANGE TURN SIGNAL SYSTEM**  
Lightly touch the signal lever for three flashes while changing lanes.



**POWER WINDOW TIMER**  
After turning the engine off or opening the doors, power windows are operable for 30 seconds.



**HEADLAMP AUTO OFF FUNCTION**  
Once you turn the car off and step out, the headlamps shut off to conserve battery.



**OPEN DOOR ALARM**  
If you start driving while a door is ajar or open, an alarm will sound.



**AUTO DOOR RELOCK SYSTEM**  
Not opening any doors within 30 seconds after unlocking it from outside will relock the doors.



**AUTO SPEED ADJUSTABLE WIPERS**  
In Timing Mode, the wipers operate faster at higher vehicle speeds.



**15-SECOND INTERIOR LIGHT DELAY**  
After switching off the car, the cabin light remains for 15 seconds to allow scanning for possessions.

### DUAL SRS AIRBAGS

Protects the driver and front passenger by absorbing the force of impact in the event of a collision.

