

ISUZU

ELF



SAFETY PLUS

SRS
AIRBAG

ASR
ANTI-SLIP REGULATOR

ABS
ANTI-LOCK BRAKING SYSTEM

EBD
ELECTRONIC BRAKE FORCE DISTRIBUTION

4 WHEELER

GVW 4,800kg

**NLR
PRO**

**NLR
130**




SPECIFICATIONS		NLR PRO		NLR 130	
MODEL CODE		NLR77UEE	NLR77UHE	NLR85UEE	NLR85UHE
Drive System		4 x 2			
ENGINE					
Model		4JH1-TC		4JJ1-TC	
Type		4-Cylinder In-line, 4-Cycle, Water-Cooled			
		OHV, Turbo with Intercooler		DOHC, Turbo with Intercooler	
Displacement	cc	2,999			
Maximum Output (Gross)	kW (PS) @ rpm	81 (110) @ 3,200		96 (130) @ 3,050	
Maximum Torque	Nm (kgfm) @ rpm	230 (24) @ 1,400-3,200		330 (33.6) @ 1,600-2,600	
Emission Level		Euro 2			
Fuel System		Commonrail Direct Injection			
TRANSMISSION					
Model / No. of Speed		MSB-5S / Manual 5-Speed		MYJ-5T / Manual 5-Speed	
Gear Ratio	1st	5.016		5.315	
	2nd	2.672		3.053	
	3rd	1.585		1.655	
	4th	1.000		1.000	
	5th	0.770		0.721	
	Reverse	4.783		5.068	
	Final	5.857		4.556	
WEIGHT & CAPACITIES					
Gross Vehicle Weight	kg	4,800			
Curb Weight	kg	1,865	1,915	1,925	1,975
Front	kg	1,345	1,355	1,410	1,420
Rear	kg	520	560	515	555
Fuel Tank Capacity	l	75	100	75	100
AXLE					
Front	Type	Reverse Elliot, I-Beam			
Front Axle Capacity (Design)	kg	2,900			
Rear	Type	Banjo, Full Floating			
Rear Axle Capacity (Design)	kg	3,600			
SUSPENSION SYSTEM					
Suspension	Front	Semi Elliptical Alloy Steel Leaf Spring with Double Acting Telescopic Shock Absorber, Stabiliser Bar			
	Rear	Semi Elliptical Alloy Steel Leaf Spring with Double Acting Telescopic Shock Absorber			
TYRES & WHEELS					
Tyres		205 / 85R16			
Wheels		16 x 5.5J-85			
BRAKES					
Service	Type	Hydraulic system with auto adjusting front and rear drum brakes			
		Dual circuit, vacuum assistance and Anti-Lock Brake System (ABS) with Electronic Brake force Distribution (EBD)			
Parking Brake Type		Transmission Mounted, Mechanical Operated Internal Expanding			
Auxiliary		Exhaust Brake			
STEERING					
Steering System		Power Assist, Recirculating Ball Type			
Min. Turning Radius	m	5.4	7.1	5.4	7.1
ELECTRICAL					
Battery		12V x 2			
Alternator		12V-60A		24V-90A	
OTHER SAFETY					
Supplemental Restraint System (SRS)		Equipped with Pre-tensioner Seatbelt			
Anti-Slip Regulator (ASR)		Equipped with on/off function			
DIMENSION					
Overall Length	mm	4,730	6,025	4,730	6,025
Overall Width	mm		1,815		
Overall Height	mm	2,172	2,175	2,172	2,175
Wheelbase	mm	2,475	3,345	2,475	3,345
Front Overhang	mm		1,110		
Rear Overhang	mm	1,145	1,570	1,145	1,570
Front Tread	mm		1,475		
Rear Tread	mm		1,395		
Cab to Axle Center	mm	2,022	2,892	2,022	2,892

ISUZU

ISUZU MALAYSIA SDN BHD 200401026438 (664946-H)

501D, LEVEL 5, TOWER D, UPTOWN 5, NO.5, JALAN SS21/39,
DAMANSARA UPTOWN, 47400 PETALING JAYA, SELANGOR DARUL EHSAN.
GENERAL LINE: 03-7723 9777 FAX: 03-7723 9779
HOTLINE: 1-300-88-1133 www.isuzu.net.my

 **IsuzuTrucksMalaysia**

ISUZU SERVICE CENTRE SDN BHD 201601034731 (1205672-X)

LOT 730, JALAN SG. RASA, SECTION 17,
40000 SHAH ALAM, SELANGOR DARUL EHSAN.
PHONE: 03-5513 0518
FAX: 03-5512 7550

TESTED AND PROVEN POWERTRAIN

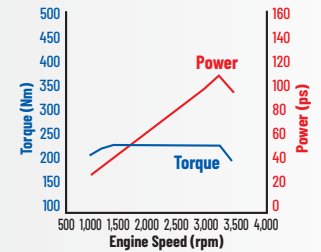


NLR PRO 4JH1-TC

Displacement: **2,999cc**
Max. Output (Gross): **110ps (81kW) @ 3,200rpm**
Max. Torque: **230Nm @ 1,400 - 3,200rpm**

110PS
MAX POWER

230Nm
FLAT TORQUE

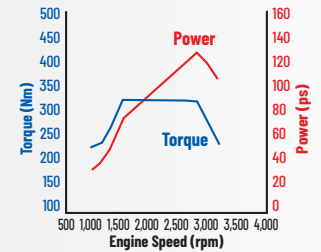


NLR 130 4JJ1-TC

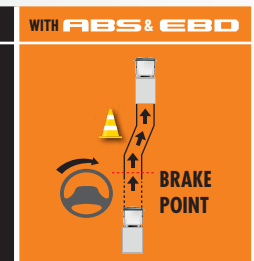
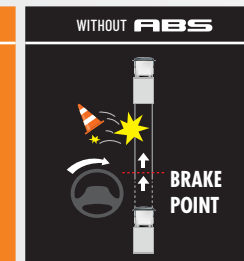
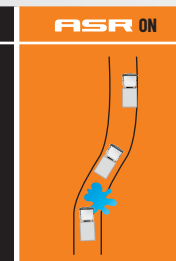
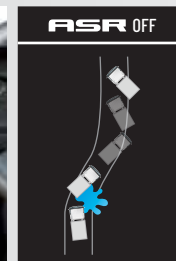
Displacement: **2,999cc**
Max. Output (Gross): **130ps (96kW) @ 3,050rpm**
Max. Torque: **330Nm @ 1,600 - 2,600rpm**

130PS
MAX POWER

330Nm
FLAT TORQUE



CLASS-LEADING SAFETY AND LONG TERM COST SAVINGS



ASR traction control helps prevent wheelspins and improves vehicle stability when driving on slippery roads.

EBD is a function that uses the ABS to distribute braking force between the front and rear wheels to compensate for changes in the load conditions or any shift of load due to acceleration/deceleration, thus preventing premature locking of the rear wheels.



*SRS airbag system and seat belt with pretensioner are activated in the event of a frontal collision, mitigating impact to the head and chest.

*Applicable for driver only.



*Applicable for NLR77UHE & NLR85UHE only.

Authorised Isuzu Dealer

AUTOEXEC CORPORATION SDN BHD (587776-U)

Semarak: 03 - 2691 2233

Setapak: 016 - 331 5543 (Sales) | 03 - 4022 4888 (Service)

 **IsuzuSemarak**
IsuzuSetapak

ISUZU
GENUINE PARTS

ISUZU
BEST VALUE PARTS