

ISUZU

ELF



SAFETY PLUS

SRS
AIRBAG

ASR
ANTI-SLIP REGULATOR

ABS
ANTI-LOCK BRAKING SYSTEM

EBD
ELECTRONIC BRAKE FORCE DISTRIBUTION

4X2 RIGID

GVW 7,500kg

GVW 8,500kg

**NPR
PRO**

**NPR
150**

**NQR
PRO**




SPECIFICATIONS		NPR PRO		NPR150		NQR PRO	
MODEL CODE		NPR81UHL	NPR81UKH	NPR75UHL	NPR75UKH	NQR75UKN	NQR75ULN
Drive System		4 x 2					
ENGINE							
Model		4HL1-TC			4HK1-TC		
Type		4-Cylinder In-line, 4-Cycle, Water-Cooled OHC, Turbo with Intercooler					
Displacement	cc	4,778			5,193		
Maximum Output (Gross)	kW (PS) @ rpm	99.3 (135)@2,600			110 (150) @ 2,600		
Maximum Torque	Nm (kgfm) @ rpm	372 (38)@1,600			404 (41) @ 1,600-2,600		
Emission Level		Euro 2					
Fuel System		Common Rail Direct Injection					
TRANSMISSION							
Model / No. of Speed		MY7-6S / 6-Speed Manual					
Gear Ratio	1st	5.979					
	2nd	3.434					
	3rd	1.862					
	4th	1.297					
	5th	1.000					
	6th	0.759					
	Reverse	5.701					
	Final	5.125			4.556		5.125
WEIGHT & CAPACITIES							
Gross Vehicle Weight	kg	7,500				8,500	
Curb Weight	kg	2,415	2,545	2,455	2,490	2,705	2,790
Front	kg	1,665	1,690	1,610	1,630	1,710	1,785
Rear	kg	750	855	845	860	995	1,005
Fuel Tank Capacity	l	100					
AXLE							
Front	Type	Reverse Elliot, I-Beam					
Front Axle Capacity (Design)	kg	3,100				3,300	
Rear	Type	Banjo, Full Floating					
Rear Axle Capacity (Design)	kg	6,600					
SUSPENSION SYSTEM							
Suspension	Front	Semi Elliptical Alloy Steel Leaf Spring					
	Rear	with Double Acting Telescopic Shock Absorber					
TYRES & WHEELS							
Tyres		215 / 75R17.5					
Wheels		17.5 x 6.00-127					
BRAKES							
Service	Type	Hydraulic system with auto adjusting front and rear drum brakes					
		Dual circuit, vacuum assistance and Anti-Lock Brake System (ABS) with Electronic Brake force Distribution (EBD)					
Parking Brake Type		Transmission Mounted, Mechanical Operated Internal Expanding					
Auxiliary		Exhaust Brake					
STEERING							
Steering System		Power Assist, Recirculating Ball Type					
Min. Turning Radius	m	6.3	7.1	6.3	7.1		7.8
ELECTRICAL							
Battery		12V x 2					
Alternator		24V-80A			24V-90A		
OTHER SAFETY							
Supplemental Restraint System (SRS)		Equipped with Pre-tensioner Seatbelt					
Anti-Slip Regulator (ASR)		Equipped with on/off function					
DIMENSION							
Overall Length	mm	5,985	6,635	5,985	6,635		7,355
Overall Width	mm	2,125					
Overall Height	mm	2,270				2,275	
Wheelbase	mm	3,365	3,815	3,365	3,815		4,175
Front Overhang	mm	1,110					
Rear Overhang	mm	1,510	1,710	1,510	1,710		2,070
Front Tread	mm	1,680					
Rear Tread	mm	1,650					
Cab to Axle Center	mm	2,795	3,242	2,792	3,242		3,602

ISUZU
ISUZU MALAYSIA SDN BHD 200401026438 (664946-H)

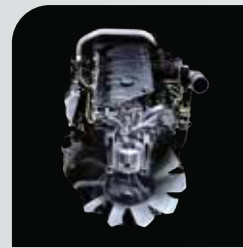
 501D, LEVEL 5, TOWER D, UPTOWN 5, NO.5, JALAN SS21/39,
 DAMANSARA UPTOWN, 47400 PETALING JAYA, SELANGOR DARUL EHSAN.
 GENERAL LINE: 03-7723 9777 FAX: 03-7723 9779

HOTLINE: 1-300-88-1133 www.isuzu.net.my

 **IsuzuTrucksMalaysia**
ISUZU SERVICE CENTRE SDN BHD 201601034731 (1205672-X)

 LOT 730, JALAN SG. RASA, SECTION 17,
 40000 SHAH ALAM, SELANGOR DARUL EHSAN.
 PHONE: 03-5513 0518
 FAX: 03-5512 7550

TESTED AND PROVEN POWERTRAIN

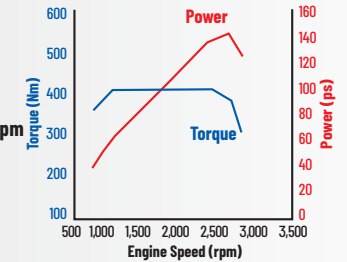


NPR PRO 4HL1-TC

 Displacement: **4,778cc**

 Max. Output (Gross): **135ps (99.3kW) @ 2,600rpm**

 Max. Torque: **372Nm @ 1,600rpm**
135PS
MAX POWER

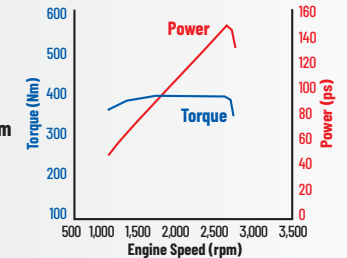
372Nm
FLAT TORQUE


NPR 150 / NQR PRO 4HK1-TC

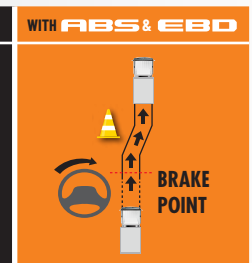
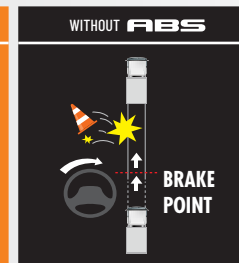
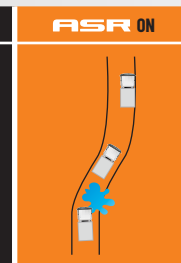
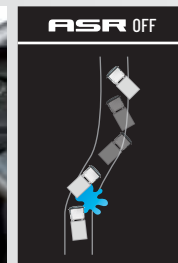
 Displacement: **5,193cc**

 Max. Output (Gross): **150ps (110kW) @ 2,600rpm**

 Max. Torque: **404Nm @ 1,600 - 2,600rpm**
150PS
MAX POWER

404Nm
FLAT TORQUE


CLASS-LEADING SAFETY AND LONG TERM COST SAVINGS



ASR traction control helps prevent wheelspins and improves vehicle stability when driving on slippery roads.

EBD is a function that uses the ABS to distribute braking force between the front and rear wheels to compensate for changes in the load conditions or any shift of load due to acceleration/deceleration, thus preventing premature locking of the rear wheels.



*SRS airbag system and seat belt with pretensioner are activated in the event of a frontal collision, mitigating impact to the head and chest.

*Applicable for driver only.

80 and 90 amperes alternators provide high voltage for high consumption electrical applications.

Authorised Isuzu Dealer

AUTOEXEC CORPORATION SDN BHD (587776-U)

Semarak: 03 - 2691 2233

Setapak: 016 - 331 5543 (Sales) | 03 - 4022 4888 (Service)

 **IsuzuSemarak**
IsuzuSetapak