

ISUZU

ELF



SAFETY PLUS

SRS
AIRBAG

ASR
ANTI-SLIP REGULATOR

ABS
ANTI-LOCK BRAKING SYSTEM

EBD
ELECTRONIC BRAKE FORCE DISTRIBUTION

4X2 RIGID

GVW 4,100kg

GVW 5,500kg

GVW 7,500kg

NLR
CREW

NMR
CREW

NPR
CREW



SPECIFICATIONS		NLR CREW	NMR CREW	NPR CREW
MODEL CODE		NLR77UFUW / UHEW	NMR77UFHW	NPR75UKHW
Drive System		4x2		
ENGINE				
Model		4JH1-TC		
Type		4-Cylinder In-line, 4 Cycle Water-Cooled		
		OHV, Turbo with Intercooler		
Displacement	cc	2,999		
Maximum Output (Gross)	kW (PS) @ rpm	81 (110) @ 3,200		
Maximum Torque	Nm (kgfm) @ rpm	230 (23.5) @ 1,400-3,200		
Emission Level		Euro 2		
Fuel System		Commonrail Direct Injection		
TRANSMISSION				
Model / No. of Speed		MSB-5S / Manual 5-Speed		
Gear Ratio				
	1st	5.016		
	2nd	2.672		
	3rd	1.585		
	4th	1.000		
	5th	0.770		
	6th	-		
	Reverse	4.783		
	Final	5.857		
		MYT-6S / Manual 6-Speed		
		5.979		
		3.434		
		1.862		
		1.297		
		1.000		
		0.759		
		5.701		
		5.125		
WEIGHT & CAPACITIES				
Gross Vehicle Weight	kg	4,100	5,500	7,500
Curb Weight	kg	2,045 / 2,070	2,110	2,750
Front	kg	1,380 / 1,385	1,380	1,795
Rear	kg	665 / 685	730	955
Fuel Tank Capacity	l	63 / 75	63	100
AXLE				
Front	Type	Reverse Elliot, I-Beam		
Front Axle Capacity (Design)	kg	2,900		3,100
Rear	Type	Banjo, Full Floating		
Rear Axle Capacity (Design)	kg	3,600	5,000	6,000
SUSPENSION SYSTEM				
Suspension	Front	Semi Elliptical Alloy Steel Leaf Spring with Double Acting Telescopic Shock Absorber, Stabiliser Bar		
	Rear	Semi Elliptical Alloy Steel Leaf Spring with Double Acting Telescopic Shock Absorber		
TYRES & WHEELS				
Tyres		205 / 85R16		215 / 75R17.5
Wheels		16 x 5.5J-85	16 x 5.5J-116.5	17.5 x 6.0J-127
BRAKES				
Service	Type	Hydraulic system with auto adjusting front and rear drum brakes		
		Dual circuit, vacuum assistance and Anti-Lock Brake System (ABS) with Electronic Brake force Distribution (EBD)		
Parking Brake Type		Transmission Mounted, Mechanical Operated Internal Expanding		
Auxiliary		Exhaust Brake		
STEERING				
Steering System		Power Assist, Recirculating Ball Type		
Min. Turning Radius	m	6.0 / 7.1	6.0	7.1
ELECTRICAL				
Battery		12V x 2		
Alternator		12V - 60A		24V-90A
OTHER SAFETY				
Supplemental Restraint System (SRS)		Equipped with Pre-tensioner Seatbelt		
Anti-Slip Regulator (ASR)		Equipped with on/off function		
DIMENSION				
Overall Length	mm	5,250 / 6,025	5,250	6,635
Overall Width	mm	1,815	1,860	2,125
Overall Height	mm	2,172 / 2,175	2,290	2,275
Wheelbase	mm	2,750 / 3,345	2,750	3,815
Front Overhang	mm		1,110	
Rear Overhang	mm	1,390 / 1,570	1,390	1,710
Front Tread	mm		1,475	1,680
Rear Tread	mm	1,395	1,425	1,650
Cab to Axle	mm	1,186 / 1,781	1,186	2,251

TESTED AND PROVEN POWERTRAIN



NLR CREW | NMR CREW

4JH1-TC

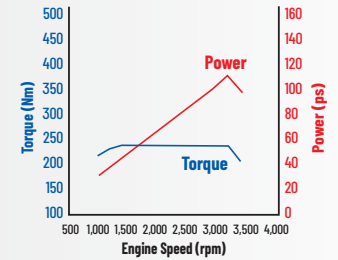
Displacement: **2,999cc**

Max. Output (Gross): **110ps (81kW) @3,200rpm**

Max. Torque: **230Nm @1,400 - 3,200rpm**

110PS
MAX POWER

230Nm
FLAT TORQUE



NPR CREW

4HK1-TC

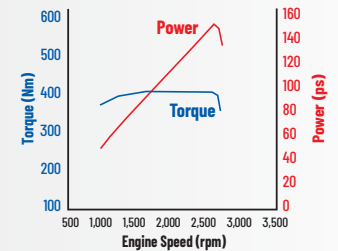
Displacement: **5,193cc**

Max. Output (Gross): **150ps (110kW) @2,600rpm**

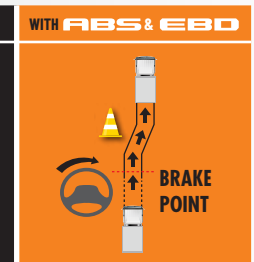
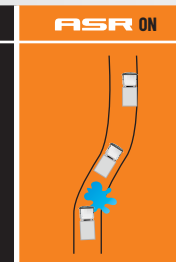
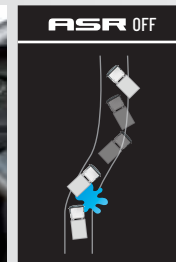
Max. Torque: **404Nm @1,600-2,600rpm**

150PS
MAX POWER

404Nm
FLAT TORQUE



CLASS-LEADING SAFETY AND LONG TERM COST SAVINGS



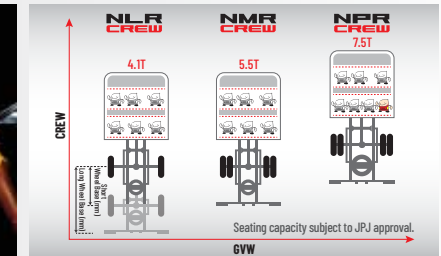
ASR traction control helps prevent wheelspins and improves vehicle stability when driving on slippery roads.

EBD is a function that uses the ABS to distribute braking force between the front and rear wheels to compensate for changes in the load conditions or any shift of load due to acceleration/deceleration, thus preventing premature locking of the rear wheels.



*SRS airbag system and seat belt with pretensioner are activated in the event of a frontal collision, mitigating impact to the head and chest.

*Applicable for driver only.



ELF Crew seating capacity and GVW chart.

ISUZU

ISUZU MALAYSIA SDN BHD 200401026438 (664846-H)

501D, LEVEL 5, TOWER D, UPTOWN 5, NO.5, JALAN SS21/39,
DAMANSARA UPTOWN, 47400 PETALING JAYA, SELANGOR DARUL EHSAN.
GENERAL LINE: 03-7723 9777 FAX: 03-7723 9779
HOTLINE: 1-300-88-1133 www.isuzu.net.my

f IsuzuTrucksMalaysia

ISUZU SERVICE CENTRE SDN BHD 201601034731 (1205672-X)

LOT 730, JALAN SG. RASA, SECTION 17,
40000 SHAH ALAM, SELANGOR DARUL EHSAN.
PHONE: 03-5513 0518
FAX: 03-5512 7550

ISUZU
GENUINE PARTS

ISUZU
BEST VALUE PARTS

Authorised Isuzu Dealer

AUTOEXEC CORPORATION SDN BHD (587776-U)

Semarak: 03 - 2691 2233

Setapak: 016 - 331 5543 (Sales) | 03 - 4022 4888 (Service)

f IsuzuSemarak
f IsuzuSetapak