

ISUZU

ELF



SAFETY PLUS

SRS
AIRBAG

ASR
ANTI-SLIP REGULATOR

ABS
ANTI-LOCK BRAKING SYSTEM

EBD
ELECTRONIC BRAKE FORCE DISTRIBUTION

 **IMMOBILIZER**

AVAILABLE ON NPR CREW MODEL

4 WHEELER

GVW 4,100kg

NLR
CREW

6 WHEELER

GVW 5,200kg

NMR
CREW

GVW 7,500kg

NPR
CREW

5

YEARS WARRANTY
OR
300,000 km
WHICHEVER
COMES FIRST

EURO 4



FREE
SERVICE CAMPAIGN

 **ISUZU**

Product image for illustration purposes only. Actual product may vary.

SPECIFICATIONS

NLR CREW

NMR CREW

NPR CREW

MODEL CODE	NLR77UFEW	NMR77UFHW	NPR75UKHW
Drive Train		4 x 2	
Type	4-Wheeler		6-Wheeler
ENGINE			
Model	4JH1-TC		4HK1-TCN
Type	4-Cylinder Inline, 4 Cycle, Water-Cooled		
	OHV, Turbo with Intercooler		OHC, VGS Turbo with Intercooler
Displacement	cc	2,999	5,193
Maximum Output (Gross)	kW (PS) @ rpm	77 (105) @ 3,200	114 (155) @ 2,600
Maximum Torque	Nm (kgfm) @ rpm	230 @ 1,400-3,400	419 @ 1,600-2,600
Emission Level		Euro 4	
Fuel System		Commonrail Direct Injection	
TRANSMISSION			
Model / No. of Speed		MSB5S	MY-6S
Gear Ratio		Manual 5-Speed	Manual 6-Speed
	1st	5.016	5.979
	2nd	2.672	3.434
	3rd	1.585	1.862
	4th	1.000	1.297
	5th	0.770	1.000
	6th	-	0.759
	Reverse	4.783	5.701
	Final	5.857	5.125
WEIGHT & CAPACITIES			
Gross Vehicle Weight	kg	4,100	5,200
Curb Weight	kg	2,100	2,170
Front	kg	1,420	1,920
Rear	kg	680	745
Fuel Tank Capacity	l	63	100
AXLE			
Front	Type	Reverse Elliot, I-Beam	
Front Axle Capacity (Design)	kg	2,900	3,100
Rear	Type	Banjo, Full Floating	
Rear Axle Capacity (Design)	kg	3,600	6,600
SUSPENSION SYSTEM			
Suspension	Front	Semi Elliptical Alloy Steel Leaf Spring with Double Acting Telescopic Shock Absorber, Stabiliser Bar	Semi Elliptical Alloy Steel Leaf Spring with Double Acting Telescopic Shock Absorber
	Rear	Semi Elliptical Alloy Steel Leaf Spring with Double Acting Telescopic Shock Absorber	
TYRES & WHEELS			
Tyres		205/85R16	215/75R17.5
Wheels		16 x 5.5J-85	16 x 5.5-116.5
			17.5 x 6.00-127
BRAKES			
Service	Type	Hydraulic System with Auto Adjusting Front and Rear Drum Brakes	
		Dual Circuit, Vacuum Assistance and Anti-Lock Brake System (ABS) with Electronic Brake Force Distribution (EBD)	
Parking Brake Type		Transmission Mounted, Mechanical Operated Internal Expanding	
Auxiliary		Exhaust Brake	
STEERING			
Steering System		Power Assist, Recirculating Ball Type	
Min. Turning Radius	m	6.1	7.1
ELECTRICAL			
Battery		95D31L x 1	80D26L x 2
Alternator		12V-60A	24V-90A
OTHER SAFETY			
Safety		Supplemental Restraint System (SRS) with Pre-Tensioner Seatbelt	
		Anti-Slip Regulator (ASR) with On/Off Function	
Security		Central Locking with Remote Keyless Entry	Central Locking with Remote Keyless Entry & Immobiliser
DIMENSION			
Overall Length	mm	5,250	6,635
Overall Width	mm	1,815	2,125
Overall Height	mm	2,172	2,275
Wheelbase	mm	2,750	3,815
Front Overhang	mm		1,110
Rear Overhang	mm	1,390	1,710
Front Tread	mm	1,475	1,680
Rear Tread	mm	1,395	1,650
Cab to Axle Center	mm	1,781	1,186



ISUZU MALAYSIA SDN BHD 200401026438 (664946-H)

501D, LEVEL 5, TOWER D, UPTOWN 5, NO.5, JALAN SS21/39,
DAMANSARA UPTOWN, 47400 PETALING JAYA, SELANGOR DARUL EHSAN.
GENERAL LINE: 03-7723 9777 FAX: 03-7723 9779
HOTLINE: 1-300-88-1133 www.isuzu.net.my

[f](#) IsuzuTrucksMalaysia [y](#) IsuzuTrucksMalaysia [globe](#) www.isuzu.net.my

ISUZU SERVICE CENTRE SDN BHD 201601034731 (1205672-X)

LOT 730, JALAN SG. RASAU, SECTION 16,
40200 SHAH ALAM, SELANGOR DARUL EHSAN.
PHONE: 03-5513 0518
FAX: 03-5512 7550

TESTED AND PROVEN POWERTRAIN



NLR CREW / NMR CREW

4JH1-TC
Displacement: 2,999cc
Max. Output (Gross): 77kW (105ps) @ 3,200rpm
Max. Torque: 230Nm @ 1,400 - 3,400rpm

105PS
Max Power

230Nm
Flat Torque



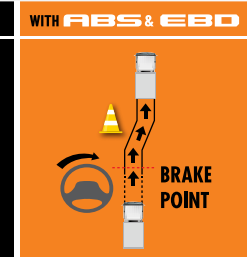
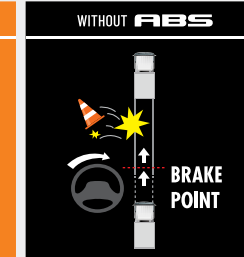
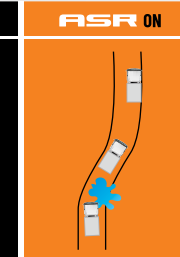
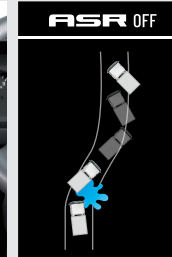
NPR CREW

4HK1-TCN
Displacement: 5,193cc
Max. Output (Gross): 114kW (155ps) @ 2,600rpm
Max. Torque: 419Nm @ 1,600 - 2,600rpm

155PS
Max Power

419Nm
Flat Torque

CLASS-LEADING SAFETY AND LONG TERM COST SAVINGS



ASR traction control helps prevent wheelspins and improves vehicle stability when driving on slippery roads.

EBD is a function that uses the ABS to distribute braking force between the front and rear wheels to compensate for changes in the load conditions or any shift of load due to acceleration/deceleration, thus preventing premature locking of the rear wheels.



*SRS airbag system and seat belt with pretensioner are activated in the event of a frontal collision, mitigating impact to the head and chest.

*Applicable for driver only.



Brand New Feature - USB Port



LED Headlight to provide better visibility

Authorised Isuzu Dealer

AUTOEXEC CORPORATION SDN BHD

[Company No. 587776-U (200201020113)]

Ampang : 03 - 4265 2200

Jinjang : 03 - 6251 7329

Semarak : 03 - 2691 2233

Setapak : 03 - 4022 4888

ISUZU
GENUINE PARTS

ISUZU
BEST VALUE PARTS